

SCULPTURE FOR CLYDE

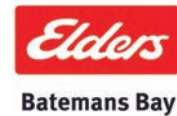
BATEMANS BAY FORESHORE
27 MAY – 4 JUNE 2023

SCULPTURE
FOR CLYDE

MAJOR PARTNERS



MAJOR SPONSORS



INDOOR

PAGE

6

Sallie Portnoy, Flying South
Wil Edwards-Franchimon, Cultural Connection
Shannon Stone, Kingfishers Gift
Karen Warburton, The Eternal Sunshine of the Spotless Mind
Nick Hopkins, Breaking Free

10

Ulan Murray and Rachel Burns, Aqueous
Sallie Portnoy, Nascentia Light Blades
Lex Sorrentino, Angler Fish, Mermaid
Jen Mallinson, Echoes of Summer

14

Scott Ingram, Bird
Suzanne Shelley, Australian Landscape, From the Rainforest
Wil Edwards-Franchimon, Arise
Michael Snape, Voice 1

7

Karen Warburton, Stasis; an Anatomy of Motion
Sallie Portnoy, Nascentia Pod Casts
Susan, Curran, Marquette for a Spotted Gum
Michael, Meszaros, Moonrise Over Water
Ken Boer, AI

11

Paul Dimmer, Muse
Ron (R.M) Gomboc, Together Series: Close
Wil Edwards-Franchimon, Wisp
Lex Sorrentino, Seagulls, School of Fish

15

Scott Ingram, SuperNature, Tower of Silence
Helen Stark, Through the Veil of Time
Ruth Lupton, Cicadas in July, Doctrines Trail

8

Kelly Shelley, Fleeting Moment
Jenni Bourke, It's NOT a Game
Hugh McLachlan, Bathing Woman – Variations
James Bunter, Bubble Rock #1
David Scully, Together

12

Eamon Hamilton, Blue Man, Pool to Peak
The Castle, The Mill
Damien Nicholls, The Angst

16

Nick Hopkins, Tree Ring Mandala
Amanda Harrison, Walking On Sunshine, Interlocked
Paul Dimmer, Tuross River Mermaid
Kelly Shelley, Entanglement

9

Damien Nicholls, Lock it Down
Barry Jackson, Sentinel
Wil Edwards-Franchimon, Kitten Play
Paul Dimmer, Lace Dancer
Ralph Tikerpae, Horse and Rider with Shield

13

Amanda Harrison, Starfish on the Beach, Freedom!
Gabe Parker, Connected by Environments (Atomic)
Susan McAlister, CNoEvil, Euphoria

17

Cheryl Johnson, Vision
Nick Hopkins, Hoop Pine Mandala, Tree Ring Bowl
Barak Zelig, Escape

18|19 MAP

20 BATEMANS BAY
SCULPTURE WALK

OUTDOOR

PAGE 23 **Benjamin Jay Shand**,
Array 16 (Carousel)
Hugh McLachlan,
Bathing Woman–Swaying
Susan Curran,
Tribute to a Spotted Gum
Thomas Westra, Light

27 **Ron (R.M) Gomboc**,
Nature's Cup of Life
Edward Willson, All
Stations to Infinity
Anton Mc Murray,
The First Agreement
Richard Moffatt, Weed
Edward Willson, Autumn Fade

31 **Senden Blackwood**,
Portmanteau
Kim Sangsug, Peace of Mind
Andrew May, Clidna
Al Phemister, Chelonian

24 **Deborah Redwood**,
Starfish
Donald Blaikie,
Medusa Family
Wil Edwards-Franchimon,
Release
Vlase Nikoleski,
Fish out of Water

28 **Thomas Westra**, Radiance
Andrew May, Manannin
Mac Lir
Philip Spelman, Shuffle

32 **Robert Barnstone**,
Crippled in Time
Alex Figgis,
Ammonite Attack
Gary Christian,
Dancing in Time
Jack Griffin,
Being in Light

25 **Tobias Bennett**,
The Hungry Egret
Ken Taber, Old Man
Paul Dimmer, Mermaid
Daryl Harbrow, Whale Tale
Jenni Bourke, Critical Interface

29 **Ralph Tikerpae**, Bovine II
James Bunter, Fractal Möbius
Edward Willson, Modern Lovers
Greg McLean, Reaching Out
Gary Christian, In the Balance

33 **Tim Barras**, A Sense
of Proportion
Alex Figgis,
Heavy Metal Seahorse
Jesse Graham, Love in the
Deep, Flower Power

26 **Ulan Murray and Rachel
Burns**, Emergence
Ayad Alqaraghooli,
A Promise we will be
Together Forever
Ken Boer, Sentinel
Naomi Taylor Royds,
Black Summer

30 **Jesse Graham**, Alter Ego
Ralph Tikerpae,
Princess and Horse
Daryl Harbrow, Jumparoo
Sian Watson, Turbine

34 **Gabe Parker**, Connected
by Environments
Jack Griffin, Pell'ian Hypocrisy
Tom Buckland, Bruce
Senden Blackwood, Oyo



INDOOR 1-59



1. Sallie Portnoy

FLYING SOUTH

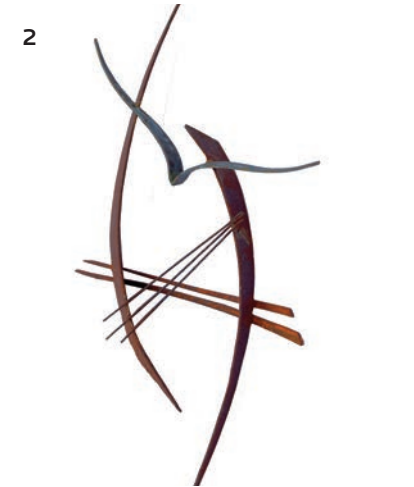
Cast Lead Crystal

Three ducks on the wall conjure the ease and grace with which these birds fly through the air; they convey the superficial ambience of permanent stability of mid twentieth century middle class.

There isn't much you can hang on a living room wall that screams mid-century, middle class suburbia more than a trio of ceramic ducks. They have become a well-loved retro symbol of popular kitsch.

Interestingly the first wall mounted Mallard ducks were created at the English pottery, Stoke-on-Trent, at the Beswick Factory in 1938. They continued producing these flying ducks right up until 1973.

\$3,200



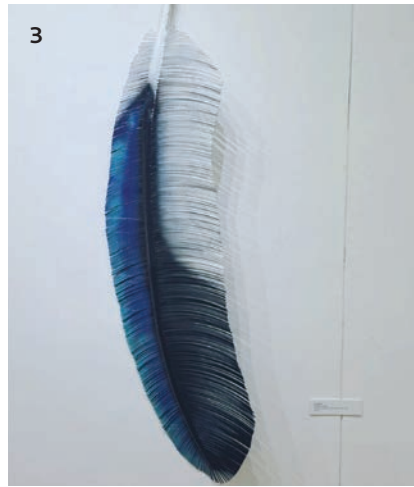
2. Wil Edwards-Franchimon

CULTURAL CONNECTION

Corten and mild steel & brass, welded. Suitable for wall hanging

If we strive to connect with people from a variety of cultures, we can learn from each other and hopefully live in harmony.

\$550



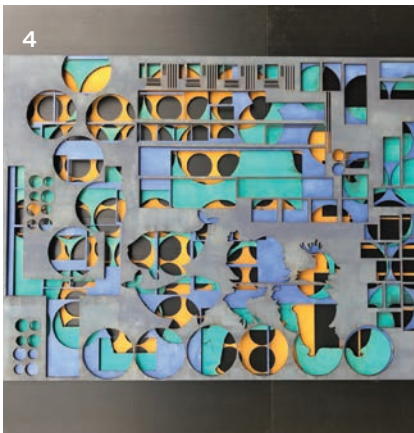
3. Shannon Stone

KINGFISHER'S GIFT

Steel, steel wire, paint

The *Kingfishers Gift* represents the beauty and softness often left behind for us, by nature.

\$6500



4. Karen Warburton

THE ETERNAL SUNSHINE OF THE SPOTLESS MIND

Wood assemblage

If you could erase your painful memories associated with heartbreak, would you? The audience will see layers, overlaps and positives and negatives; confusion but this is literally how the mind works. Just like the movie of the same title, the audience may find lost souls who find in each other nothing more than temporary highs.

\$560



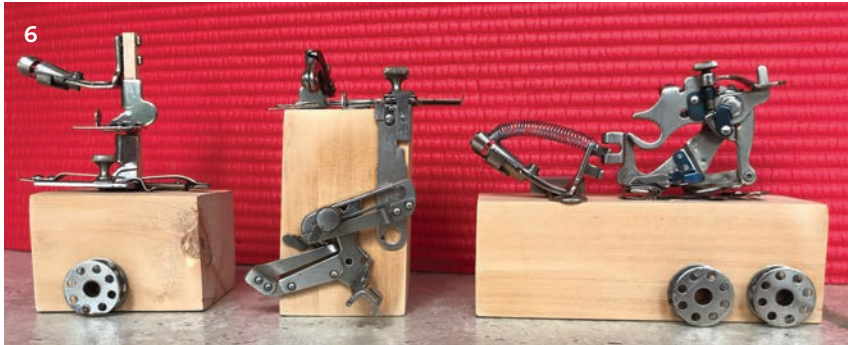
5. Nick Hopkns

BREAKING FREE

Camphor Laurel, wood turned. Upcycled gabion cage. Toughened glass table top

The pandemic has made us socially cautious. The human figure represents all humans tentatively emerging from the necessary restrictions that kept us safer.

\$325



6. Karen Warburton

STASIS; AN ANATOMY OF MOTION

Huon pine and stainless steel

1000 year old Tasmanian Huon Pine meets 100 year old stainless steel Singer sewing machine parts. Time has created a state of inactivity. No forward movement is seen only echoes of motion. Once active and alive with dynamicity these materials have now become new mediums for artists.

\$670

7. Sallie Portnoy

NASCENTIA POD CASTS

Kiln & furnace cast glass

Springtime in Batemans

Erotic nascent pods

Burgeon forth

Kiss the sky

\$10,000



8. Susan Curran

MARQUETTE FOR A SPOTTED GUM

Woodfired ceramic trunk, granite and welded steel base and pole, porcelain leaves

Spotted gum maquette used to work out techniques and proportions of a large version.

\$750



9. Michael Meszaros

MOONRISE OVER WATER

Copper and brass

The work is a two sided fabricated relief showing the moon rising from behind clouds over a dark sea, with the moon's reflection on the water.

\$3,300



10. Ken Boer

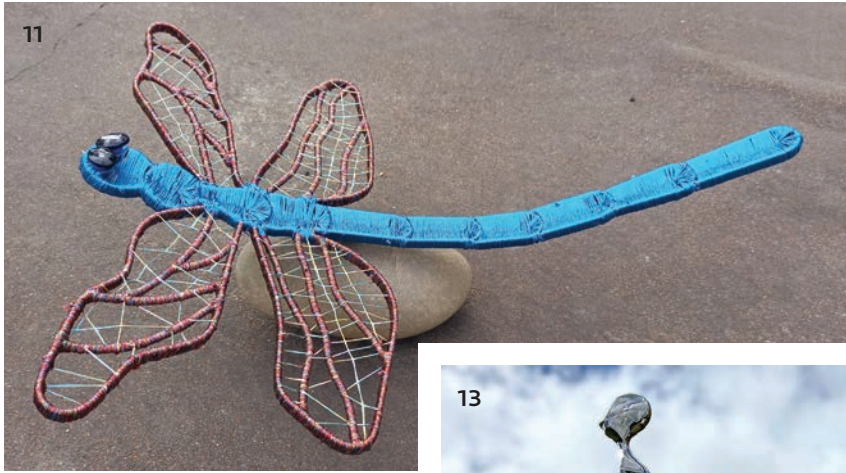
AI

Granite and Aluminium

AI is a playful, fantastical character, an organic fusion of the natural and industrial.

\$1,250





11. Kelly Shelley

FLEETING MOMENT

Wood assemblage

Embroidery thread woven over, welded steel frame mounted on local river stone. Embellished with blue sun stones.

An artist's attempt to capture a fleeting moment in time, between landing and take off. To appreciate the amazing iridescence, grace and agility of this wonderful creature, whose entire lifespan seemingly lasts for only a blink of the eye.

Not for sale



12. Jenni Bourke

IT'S NOT A GAME

Hand sculpted clay. Sprayed with 5 layers of glazes and fired to cone 8 with a special firing technique

At first glance this work looks like something you could play with. This is what we are doing to our planet and all that lives on it. It is about time we took it more seriously.

\$720



13. Hugh McLachlan

BATHING WOMAN – VARIATIONS

Stainless steel rods and plate

Explores the freedom of bathing, where water overpowers gravity, and you experience that primal sensation of immersion and being suspended; the lightness of weightlessness.

\$18,000



14. James Bunter

BUBBLE ROCK #1

Sandstone, pipe and convex mirror

The bubble floats, the rock stands firm, and the mirror reflects, all into the void that surrounds them.

\$2,000



15. David Scully

TOGETHER

Laminated merbau chainsaw and hand tools

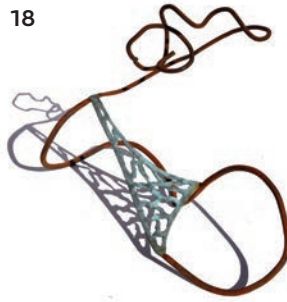
Embracing male and female nude. Construction from laminated merbau. Chainsaw and hand carved.

\$2,800

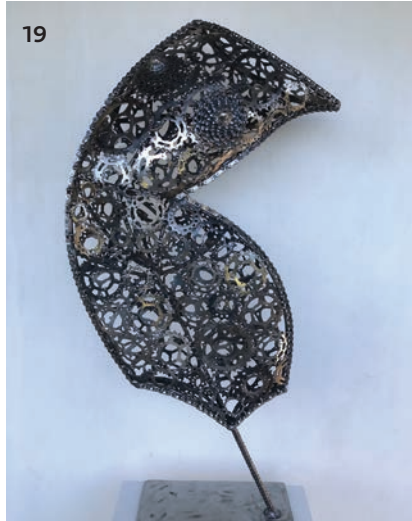
16



18



19



17



20

**16. Damien Nicholls****LOCK IT DOWN***Steel*

The work was conceived and created during the covid 19 pandemic in the midst of lockdowns, lockouts, shutdowns and restrictions.

The terrestrial globe has had a long history, it has buoyed travellers for hundreds of years. As children we would spin the globe and dream of one day traveling to far off places. Throughout history people have always had a natural compulsion to travel and explore the globe, to learn about and from each other. However, During the Covid 19 pandemic we saw borders close and our travel restricted internationally, regionally and even locally. We saw our globe locked down.

\$3,500

17. Barry Jackson**SENTINAL***Clay, multifaceted*

I enjoy the spontaneity of the material. The combination of the conscious discipline of the technical aspect of working with the material, and the accidental avenues the clay can lead you down.

\$6,500

18. Wil Edwards-Franchimon**KITTEN PLAY***Mild steel and brass*

Take time out from the worries of the world and enjoy the innocent, happy, playfulness of the young.

\$350

19. Paul Dimmer**LACE DANCER***Bicycle parts and mild steel, coated with penetrol*

An abstract and 'lacy' torso of a dancer.

\$2,000

20. Ralph Tikerpae**HORSE AND RIDER WITH SHIELD***Recycled Metal*

I have been working on the Horse and Rider series, both large and small, for some decades. These figures symbolise the artist and his artistic practice interpreting the unpredictability, volatility, and natures of the joust between the two.

\$470



21



23



24



22



25

21. Ulan Murray and Rachel Burnss

AQUEOUS

Copper

A small untraceable droplet forms under the dark shadow of a cloud suspended in the sky by the soft music of the universe, it begins collecting.

It grows, until it is too heavy for the sky to hold- and it falls. It falls to the earth. The untraceable droplet slips into the collective, it is swept apart. Now it is not a droplet at all. The fragments of the droplet seep into the pounding veins of the earth. Perhaps tomorrow the sun will come to collect some of the water and give it back to the sky. The untraceable droplet will become so dispersed one may imagine it could have never existed. And it is here you may find eternity.

\$25,000

22. Sallie Portnoy

NASCENTIA LIGHT BLADES

Cast glass, wood, corten steel, LED lights

In the Ancient Hebrew Scriptures of the Talmud can be found this beautiful and mysterious sentence:

'Every blade of grass has its angel that bends over it and whispers, 'Grow, grow, grow.' According these teachings, one of the forces that angels carry is the urge to grow – to develop, improve, and evolve. By noting that even every blade of grass is imbued with this urge, the it is saying that, like light, gravity, and electromagnetism, growth is a ubiquitous force of nature.

\$36,000

23. Lex Sorrentino

ANGLER FISH

Two part apoxie clay, air dry polymer clay (flexible), paversand, inks and enamels, glass eyes

Angler Fish, wall hanging.

\$1500

24. Lex Sorrentino

MERMAID

Two part apoxie clay, air dry polymer clay over wire an foil armature, amethyst & crystals, enamel paints

Mermaid, sculpted.

\$750

25. Jen Mallinson

ECHOES OF SUMMER

Stainless steel

Floating like leaves suspended in space, this deconstructed forest plays on memories of summer on the Australian east coast.

\$18,800



26. Paul Dimmer

MUSE

Welded new and recycled stainless steel

Muse, generally thought of as the inspiration for all the creative arts.

\$18,000

27. Ron (R.M) Gomboc

TOGETHER SERIES: CLOSE

Brush finish stainless steel on patinated copper base

In Life it is important to understand the necessity of good relationships as we all need someone to love.

\$3,800

28. Wil Edwards-Franchimon

WISP

Corten steel and brass, welded

A salute to the untiring work of our volunteer RFS and SES workers during the 2019/20 Black Summer, as wisps of regrowth now replace the wisps of smoke.

\$650

28



29. Lex Sorrentino

SEAGULLS

Two part apoxie clay set on a wooden base

Seagulls, sculpted.

\$600

30. Lex Sorrentino

SCHOOL OF FISH

Two part apoxie clay, acrylic pour skin (over clay), metal/glass findings, glass eyes, wooden base

School of fish, sculpted.

\$750





31



32

31. Eamon Hamilton

BLUE MAN

Welded steel

Abstract figurative male in welded steel.

\$2,500

32. Eamon Hamilton

POOL TO PEAK

Welded steel

Representing the annual Newport ocean swim pool to peak.

\$2,500

33. Eamon Hamilton

THE CASTLE

Welded Steel

A ruined castle.

\$2,500



33



35

34. Eamon Hamilton

THE MILL

Welded steel

Assemblage of steel.

\$2,500

35. Damien Nicholls

THE ANGST

Steel, sandstone

The work was conceived and created during the covid 19 pandemic in the midst of lockdowns, lockouts, shutdowns and restrictions. Fear, anxiety and anguish are portrayed partially by drawing from elements of Edmond Munch's *The Scream*. *The Scream* by Munch is one of the most well-known pieces of art in the world.

The piece draws of familiar elements such as colour, line, shape and form that are seen in *The Scream* to evoke these same feelings in the viewer. The blue forms depict negative thoughts, the lines running up the piece create a sense of vertical movement toward the stone head piece. The natural bands on the Somersby sandstone are used to represent fear and anxiety in the right side of the brain overwhelming the left logical, rational side.

\$7,500



34



36

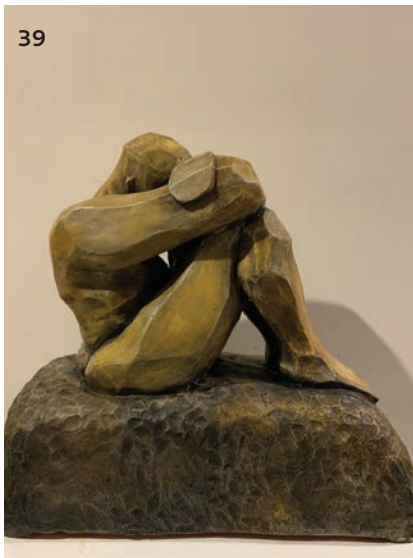
37



37



38



39



40

36. Amanda Harrison

STARFISH ON THE BEACH

Ceramic

Starfish on the Beach is a merging of the human form and the beauty of the natural world, reflecting how nature makes its mark upon us.

\$880

37. Amanda Harrison

FREEDOM!

Bronze and granite

Freedom! is a celebration of the love and security that parents provide for their children as they launch them on their life journey.

\$3,600

38. Gabe Parker

CONNECTED BY ENVIRONMENTS (ATOMIC)

Steel, Paint

Mimics the colours and textures of the earth's biosphere. The kinetic parts of the sculpture move by the same wind the viewer feels on their body and a duality will form between the two as a connection. This is intended as a metaphor for our daily connection to everything around us.

\$7,000

39. Susan McAlister

CNoEVIL

Cold finished clay

CNoEvil – see no evil. Rather than acknowledging the things that are wrong in our world we simply hide within our own safe place. Fired clay and acrylic artists paint made in response to our new world.

\$800

40. Susan McAlister

EUPHORIA

Cold finished clay

Euphoria is a feeling of an overwhelming, pleasurable, emotion. A feeling of great happiness and well-being.

\$800



41. Scott Ingram

BIRD

Marble sculpture, solid timber and metal base

I like birds.

\$8,000

42. Suzanne Shelley

AUSTRALIAN LANDSCAPE

Mahogany

Australian landscape captures a view from the Paroo River near Charleville Queensland. Mahogany slab was used to form the shapes.

\$500

43. Suzanne Shelley

FROM THE RAINFOREST

Tasmanian Blackheart Sassafras

From the rainforest was created from Tasmanian Blackheart Sassafras which has a unique blend of gold and dark colour. When the tree suffers trauma during its lifetime, fungi enter the bark and cause the black stain.

\$500

44. Wil Edwards-Franchimon

ARISE

Corten steel, welded

Arising from their breeding grounds for annual migration of up to 90,000km, Arctic Terns observe and spread messages of environmental nurture and hope between our communities.

\$650

45. Michael Snape

VOICE 1

Patinated Bronze

We need The Voice spoken.

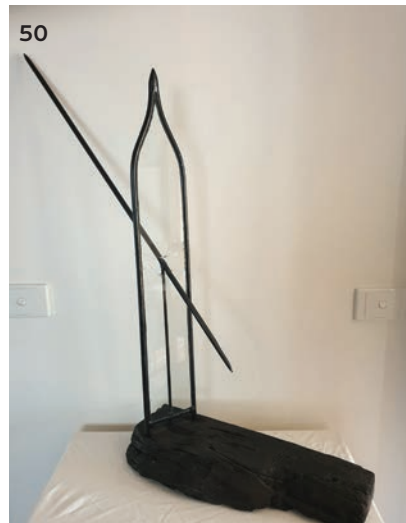
We need The Voice heard.

We need The Voice enshrined.

This is what The Voice looks like, with the word carved from one piece of hardwood then cast.

Modest, human scaled, addressing all viewers.

\$18,000



46. Scott Ingram

SUPERNATURE

Marble, mirror stainless steel

This sculpture is inspired by the power of simple shapes and geometric form that appear in nature.

\$12,000

47. Scott Ingram

TOWER OF SILENCE

Marble, sandstone and steel base

This is a sculpture of a bee pollinating a flower.

\$6,000

48. Helen Stark

THROUGH THE VEIL OF TIME

Kiln formed glass screen printed with enamels then slumped. Ash collected from the remains of my home on the south coast after the black summer fires

This work is a response to the destruction caused by the black summer fires of 2019/20 and the catastrophic loss of homes, wildlife and forests on the NSW South Coast.

Not for sale

49. Ruth Lupton

CICADAS IN JULY

Palm seed fronds, wire, Cicada wings, Christmas Beetle, glue, ground shells

Cicadas in December washed upon the beach, reformed from their watery graves, released from the vessel. A story of shifts, of metamorphosis, of change.

\$380

50. Ruth Lupton

DOCTRINES TRAIL

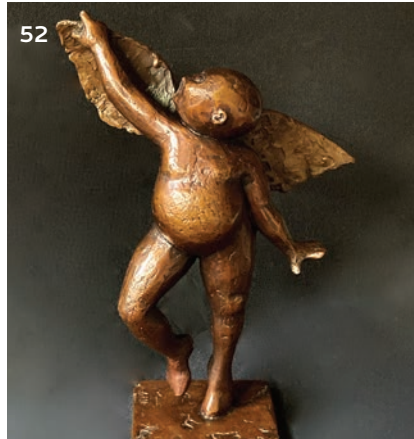
Steel, glass, wood, paint, silicone

This work calls up the beautiful traditions made through religion, the charred remains of free thought after indoctrination, the grand forms in religious architecture in so many cathedrals around the world. The feeling of the Devine casting a spear of light downward only to be shown the stark truth of evolution and logic. The glass isn't stained in that heavy tradition, to amplify the clarity of atheism.

\$870



51



52

51. Nick Hopkins

TREE RING MANDALA

Hoop pine plywood

Sustainably grown in plantations, Hoop Pine plywood forms beautiful patterns when spun on an outboard turning lathe simulating the cross section of a tree trunk.

\$950

52. Amanda Harrison

WALKING ON SUNSHINE

Bronze

By staying positive and looking to the future with hope, a world of sunshine may rain down!

\$1,400



53



54

53. Amanda Harrison

INTERLOCKED

Ceramic

A living organism is dependent on all other parts of the system for life. Keeping the connections strong and vibrant is crucial for the existence of the whole.

\$980

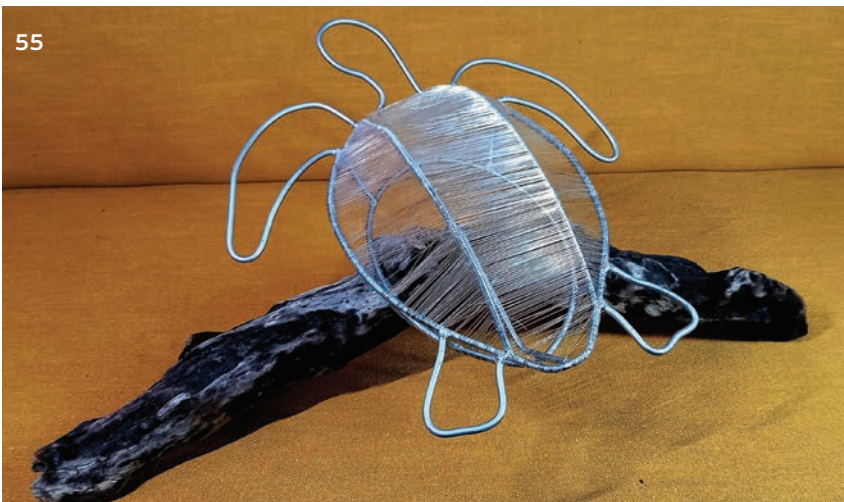
54. Paul Dimmer

TUROSS RIVER MERMAID

Welded corten and mild steel, coated with penetrol

A fantasy creature that lives in the upper reaches of the Tuross River. A shy creature, it lives in deep pools and is rarely seen.

\$4,000



55

55. Kelly Shelley

ENTANGLEMENT

Fishing line woven over welded steel, mounted on driftwood

Entanglement is a simplistic representation of the affects of discarded man-made fibres on the natural world.

Nor for sale

56



56. Cheryl Johnson

VISION

Moulded paper clay, wire, beads

Vision is a body of work created by combining vibrantly coloured paper clay shapes with over 500 stems of colourful eclectic beads that are assembled together to create 'An Eye', 'An Iris' and 'An Eyelash'. Each stem has been carefully curated to ensure that the shapes of the beads, the colours and tiny charms work as a small piece of art on their own stem. Together they appear to be exploding forward from each shape suggesting a new focus, a celebration, positivity, and opportunity looking forward.

Not for sale

57. Nick Hopkins

HOOP PINE MANDALA

Hoop pine plywood, turned and carved

Sustainably grown in plantations, hoop pine plywood forms beautiful patterns when spun on an outboard turning lathe simulating the cross section of a tree trunk.

\$950

58. Nick Hopkins

TREE RING BOWL

Hoop pine plywood, carved

The design objective was to simulate the cross section of a tree trunk whilst creating both a functional receptacle and an ornamental piece.

\$335

59. Barak Zelig

ESCAPE

Straw rubber metal wire

Sometimes we have no options, and we select or are bound by the type of escape that is available to us and that we need.

\$950

57



59



58



BATEMANS BAY FORESHORE CLYDE STEET

51 OUTDOOR SCULPTURE WALK

F FOOD AND DRINK

T TOILETS

P PARKING

**MARQUEE
INDOOR 1-59 AND
STUDENT EXHIBITION**

**41 42
43 44**

38 39 40

27 28 29

1 2 3 4 5 6 7 8 9 10 11

15 16 17 18 19 20 21 22 23

30 31 32 33

P

P

F



BATEMANS BAY SCULPTURE WALK

CLYDE RIVER FORESHORE FROM THE BRIDGE TO BATEHAVEN

sculptureforclyde.com.au/sculpturewalk/



DANCE

Haruyuki Uchida

Aquisative Award 2018 Winner of \$50,000. Japanese sculptor Haruyuki Uchida works on large-scale, outdoor, public artworks made from composite metals like stainless steel and aluminium. Incorporating magnets in his work, he creates a form and expression that utilises the gravity that exists around us. *Dance* is positioned on the point, to the west of Batemans Bay Marina at Spinnaker Reach. It is particularly worth a visit at night, with lights reflecting off the glistening red arms of the sculpture and the city behind.



BUOYANSEA

Jesse-Graham

Unveiled as part of the first *Sculpture For Clyde* event in 2017, *Buoyansea* sits beside the Clyde River on Beach Road. Artist Jesse Graham, from Eden NSW, created the work from a buoy that washed up the creek after a major flood. *Buoyansea* now looks like an upside down octopus and stands over 6 foot high.



DUET

Dora A. Rognvaldsdottir

Winner of the 2017 Aquisative Award in the inaugural *Sculpture for Clyde* Exhibition by Nowra sculptor Dora A. Rognvaldsdottir. *Duet* is "two seedlings, larger than life, speak of aspirations and nurturing". It was created from welded aluminium.



PORTAL

John Fitzmaurice

Fitzmaurice is based in North Avoca, NSW. He has a background in building and design. He is inspired by natural forms and everyday objects, transformed by abstraction and humour. Though it didn't win the formal acquisitive award, this piece was so popular among visitors to the 2018 event, it was purchased with funds raised through a community crowd funding campaign. It's located at the end of Mara Mia Walkway.



FRACTURE 2

David Ball

Made from corten steel. "My work is a distillation of forms found in our universe and scaled up or down." Ball (Wildes Meadow, NSW) is an architectural and landscape sculptor, who makes his pieces by hand, a physicality not often evident in large-scale sculpture. This piece is located near the intersection of Beach Road with Bavarde Avenue.



FAMILY

R.M (Ron) Gomboc

Made from welded corten weathering steel and copper. "In the world of nature the importance of family whether human, animal, plant is the regrowth of new generation." Gomboc (Middle Swan, WA), has exhibited more than 10 times at both *Sculpture By The Sea* Cottesloe and Bondi. Located at Beach Road/Spinnaker Reach.



OUTDOOR 1-51



1. Benjamin Jay Shand

ARRAY 16 (CAROUSEL)

Thermoformed recycled acrylic, PVC

Array 16 (Carousel) presents a series of crystalline portals in a familiar playground configuration. Continuing a series of Shand's sculptures that explore repetitive assemblage, this work presents a radial array of transparent shapes, embedding them to adjoin sky and ground through refraction and reflection. The work's playful form is offset by a solidity that casts a chain-like shadow across the ground plane.

\$9,800

2. Hugh McLachlan

BATHING WOMAN-SWAYING

Stainless steel rods and plate

Sways and moves in this state of weightlessness both solid and flowing. Changing states, solid becomes liquid, mass becomes weightless. Hard weighted stainless steel transformed; the figure becomes almost weightless and flowing.

\$45,000



3. Susan Curran

TRIBUTE TO A SPOTTED GUM

Woodfired ceramic trunk, granite and welded steel base and pole, porcelain leaves

A 3 metre high spotted gum with Epicormic growth. Constructed of wood fired local clay on a granite base with welded steel supports.

\$2500

4. Thomas Westra

LIGHT

G300 solid steel bar, stainless steel, galvanised steel, concrete

Heavy pandemic thoughts inspired me to create a sculpture celebrating light thoughts and illumination. The figure, forged from solid steel bars, is a symbol of peoples empowerment through adversity. Reaching out high and supporting a bright stainless steel sphere represents the potential for growth and transformation that exists within us.

\$22,500





5. Deborah Redwood

STARFISH

Steel

The starfish like any other marine animal with an exoskeleton has created it from calcium in the sand.

Sand is the accumulation of a collection of other dead animals that have decayed.

In the same way this starfish is a collection of broken objects welded together to create something new.

\$8,000



6. Donald Blaikie

MEDUSA FAMILY

Steel and aluminium

\$5,000 Large (1)

\$3,000 Small (2)



7. Wil Edwards-Franchimon

RELEASE

Corten steel and brass, welded.

If we pause to listen to the wisdom gathered by the far flying Arctic Terns, we begin to understand the environment around us. We can live and work in harmony with nature, offering a helping hand, rather than controlling it.

\$5,500



8. Vlase Nikoleski

FISH OUT OF WATER: (Sculpture pair: Male and Female)

Bronze, stainless steel, sandstone

In this work the essential qualities of fish are recombined in vertical sculptural landscapes which emanate from a preoccupation with the ecological and environmental issues of human activity, climate change and in this case, endangered fish species. Our interactions with fish and sea life are usually accompanied by the absence of water and hence the title *Fish out of Water*.

\$38,000 Pair

\$19,000 *Fish out of Water: Male*

\$19,000 *Fish out of Water: Female*



9



11

9. Tobias Bennett

THE HUNGRY EGRET

Steel pipe, seam welded

The egret forever searches for satisfaction in the circle of life.

\$28,000

10. Ken Taber

OLD MAN

Welded metal (painted)

Sculpture of an old man with walking stick.

\$12,000

11. Paul Dimmer

MERMAID

Welded corten and mild steel, porters rust paint

An abstract mermaid figure that will track wind direction if the wind is strong enough to overcome the inertia of the figure.

\$4,500



10



12

12. Daryl Harbrow

WHALE TALE

Corten steel

Seeking sanctuary in the depths, the Magnificent Whale.

\$6,000

13. Jenni Bourke

CRITICAL INTERFACE

Hand sculpted clay, smoke fired and multi layered spray glazed and kiln fired, steel feet, wooden and iron park bench seat

My interactive sculpture invites you to sit, look hard and reflect on our experience with bushfires, the pandemic, environmental degradation, and the links between the health of humans, animals and our planet.

The pigeons represent all living things. Some have been smoke fired and others have been multilayered spray glazed and represent our cleaner environment post covid.

I chose pigeons because most people don't like them so being a metaphor for beings most people ignore or turn a blind eye on.

\$5,700 Complete set of 30, including seat

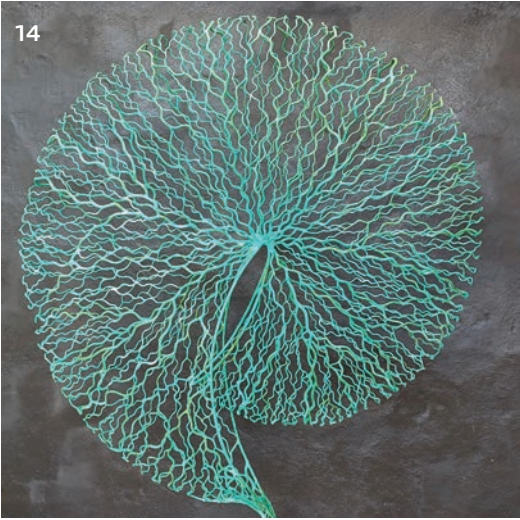
\$240 Individual Pigeons with feet (16)

\$220 Individual pigeons without feet (14)



13

14



15



14. Ulan Murray and Rachel Burns
EMERGENCE

Bronze

Emergence is a bronze sculpture that reflects the unfurling of an organism. It is a suggestion of things to come.

\$49,000

15. Ayad Alqaragholli
A PROMISE WE WILL BE TOGETHER FOREVER

Bronze and stainless-steel grade 316

This artwork represents the lovers with freedom in our greatest country Australia. This artwork is an artistic vision for the love created in our Australian nature.

\$60,000

16. Ken Boer
SENTINEL

Granite and Iron Bark wood

Sourced from the south coast forests and sea waters *Sentinel* stands watch with singular attention.

\$1,000

16



17. Naomi Taylor Royds
BLACK SUMMER

Welded mild steel 2 pac auto paint

Black Summer reflects my personal experience of the bushfires that began swiftly with a dry lightning strike late November 2019, within a National Park adjoining our farm in Braidwood soon expanding to the South Coast.

The black steel in my work *Black Summer* represents the burnt trunks of countless eucalyptus trees destroyed in the bushfires. Red steel strips illustrate flames rising upwards, rapidly advancing along treetops, racing towards their next target- never letting up.

As you stand between the trunks, you are enveloped within the darkness but look up and clear, blue skies come into view. From darkness there always follows light and I shall always remember.

\$22,000





18. Ron (R.M) Gomboc
NATURE'S CUP OF LIFE

Welded stainless steel sculpture on corten weathered steel, concrete filled base

This sculpture depicts symbol of life with the egg-shaped basket embodying the idea of rebirth and rejuvenation in the cycle of life, containing hopes and expectations for humanity and balance in nature. Uprights depict male and female carrying the hopes and expectations especially after natural disasters, fire or flood. Somehow nature restores and this gives us ongoing hope. From different viewing points the void depicts, horseshoe as in luck in relationship and from another angle a drop of water that gives life, or can be a tear drop from either happiness or despair.

\$66,000

19. Edward Willson
ALL STATIONS TO INFINITY

Granite on corten steel

The never ending journey, taking in all twists and turns along the way taking you to infinity and beyond.

\$7,900

20. Anton Mc Murray
THE FIRST AGREEMENT

Lebanese cedar, stainless steel and concrete

For a while now, I have been inspired by the mysteries of organic architecture. The spiral in a snail shell and the passage of the grain in timber, perfectly illustrate to me the ultimate relationship of function and form. By observing the way nature heals, finds ways around obstacles and continues to grow, we humans are inspired to find ways to do the same. In an age when most of us are distracted by technology on a daily basis, its helpful to be grounded in uplifting experiences of organic growth. Such experiences offer the chance to reset through the senses. The tactile and evocative qualities of wood, invites us to pause, slow down and make connections with our natural world.

\$32,000

21. Richard Moffatt
WEED

Steel

Weed is made entirely from discarded materials collected from metal recyclers.

\$60,000

22. Edward Willson
AUTUMN FADE

Granite on corten steel

From friends to family, even my own eyesight, everything slowly fades and ages, the inevitable changing of the seasons, just like life all will be gone with the wind.

\$12,000

23



26

**23. Thomas Westra****RADIANCE**

Main body from forged 316 stainless steel and bronze, additional base from zinc coated steel and concrete

Totem poles have historically been used as welcome signs.

The pattern given to this form often appears on furniture used in areas for socialising and entertaining. It represents the idea of gathering or community and gives a sense of comfort, relaxation with luxury. With its curves giving a softening effect on the ambience. Peoples performing endeavours are represented with its strong metal core and the circular shining light emitting from its surface in all directions. It invites viewers to connect and harmonise in a luminous and welcoming atmosphere.

\$25,000

24. Andrew May**MANANNIN MAC LIR**

Recycled hardwood

Manannin Mac Lir, Celtic god of the Sea – everyman is a vessel sinking into his own sea.

\$17,000

24

**26. Philip Spelman****SHUFFLE**

Steel, automotive paint, box fabricated 6mm steel plate

This sculpture is a composition of geometric abstraction, the elements balance, tumble and float creating positive and negative compositions of space light and shade. The sculpture is minimal with only a few elements that open and expand as you move around the works. The colour and tonal value unify disparate elements, provide luminosity and depth and allows the shadows to repeat themselves across other elements adding to the complexity of the work.

\$48,000



27



28



29



30



31

27. Ralph Tikerpae

BOVINE II

Recycled metal

Capturing the iconic representation and spirit of the animal by examining its strength and power via combinations of unapologetic industrial remnants from another age. *Bovine II* is brutal but poetic. There is a poetry in every line, curve and negative space.

\$1,800

28. James Bunter

FRACTAL MÖBIUS

Sandstone

A surface with only one side, and one boundary that combines the möbius strip and a fractal pattern.

\$5,000

29. Edward Willson

MODERN LOVERS

Granite and corten steel

Abstract granite, carrying the weight, sharing the load, modern times requires modern lovers, evolve adapt move forward.

\$19,900

30. Greg McLean

REACHING OUT

3mm steel plate

A hand, scarred from years of toil, reaching out to welcome and embrace to all that look upon it.

\$9,900

31. Gary Christian

IN THE BALANCE

Powder coated and chromed steel

My work responds to these twinned yet opposing forces: the shrivelling understanding human beings have of those we share the planet with; the deep but fragile connection human beings have with the natural world; a connection often lost in memory, often existing only in fragments.

Well here we are perched on the edge of a precipice. Will we topple over or steady up?

\$12,000



32



34



35



33

32. Jesse Graham

ALTER EGO

Steel and copper

This is a statement about fighting your demons.

\$25,000

33. Ralph Tikerpae

PRINCESS AND HORSE

Recycled Metal

Princess and Horse is a naïve extension of my *Horse and Rider* series dealing with an beautiful subject in a brutal and honest way. The viewer is forced to decide if it is a genuine fairy story princess or is it more tongue in cheek.

\$1,500

34. Daryl Harbrow

JUMPAROO

Corten steel

Australia's most iconic mammal, the kangaroo.

\$15,000

35. Sian Watson

TURBINE

Welded steel armature, sealed and painted concrete cladding

Watson explores our shared vulnerability with nature in this shifting landscape. *Turbine* highlights environmental and social change and the moral roles that humans and animals might play in times to come.

\$8,000

36

**36. Senden Blackwood****PORTMANTEAU**

Granite, Corten steel, mild steel, stainless steel
Portmanteau is the blending of two ideas, two textures, to create something new. The smooth reflective lens contrasts a complex rhythm, communicating memories, experiences of nature and the balance between seeking perfection and engaging with chaos.

\$POA

37. Kim Sangsug**PEACE OF MIND**

Bronze

The artwork *Peace of Mind* reminds you of a place where your heart can be at peace. In the sculpture, a pair of lovebirds 'two ducks' is using in traditional Korean wedding ceremonies and symbolises keeping the once-established ties to the end. This pair of lovebirds symbolises the artwork to protect our precious things. The two ducks in the artwork mean to protect that place in your heart. A place to your heart always gives you the strength to stand in your life.

\$18,000

38. Andrew May**CLIODNA**

Recycled hardwood

Clíodna, Celtic goddess of the sea.

\$17,000

39. Al Phemister**CHELONIAN**

Steel, copper with Verdigris

This tortoise is based on the Galapagos Tortoise that was in abundance until it was driven to the brink of extinction. Man's impact on the environmental ecosystems has been an issue long before climate change.

\$12,500

37



38



39





40



41



42



43

40. Robert Barnstone

CRIPPLED IN TIME

Recycled steel, welded and formed

The Firetree series are a set of sculptures that investigates twisted material tensions in the steel as line and form and as drawings in space. They are forms regarding shapes of blaze of fire and poverty of water. The tragic forest fires we have just experienced where 1 of 5 trees were lost in NSW in a matter of months. This has left an imprint of devastation, of the scalded earth, of desolation in Australia. These pieces reflect the memory of this battlefield with earth and our continuing war with nature. We are losing Eden every time we take another bite. Though we have the knowledge we need to act, we refuse to sacrifice our pleasures of the moment because everything has become so easy. We are all obsessed with our lives and we watch documentaries, as the garden suffers from extinction on a daily basis. In the biological time of life, the extinction rate is one species every 700 year We lose multiple species world wide, daily.

\$8,000

41. Alex Figgis

AMMONITE ATTACK

Welded found metals

A twisted and mangled yet amazingly shiny sheet of stainless steel caught my attention amongst a pile of scrap metal. Its shape was almost shell like. I refined it into the shell you see now. The tentacles emerging from it is a reminder that beautiful forms sometimes hide nasty surprises.

\$8,000

42. Gary Christian

DANCING IN TIME

Chromed and galvanized steel

Shadowing the human form, an evocation of a collective unconscious, a way to contemplate a place and its people and witness to what's happening in our troubled world.

\$22,000

43. Jack Griffin

BEING IN LIGHT

Mild steel

Buddha nature floating soul.

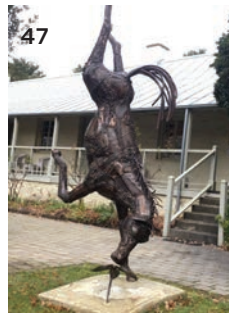
\$6,300



44



46



47



45

44. Tim Barrass

A SENSE OF PROPORTION

Found object (bent metal pipe)

Imagine the length of this pipe as the duration that First Nations people have lived here. The last 250 years of settlement would be about as long as the thread at the pipe's end.

Not For Sale

45. Alex Figgis

HEAVY METAL SEAHORSE

Welded found metals

My knowledge and passion for heavy industry form a strange relationship with my love of nature and concerns for its future. This seahorse is born from that union.

\$20,000

46. Jesse Graham

LOVE IN THE DEEP

Steel, polymer

Inspired by seeing two of these beautiful creatures in a loving embrace.

\$20,000

47. Jesse Graham

FLOWER POWER

Steel and copper

Sometimes beauty can lift your whole day!.

\$20,000

48

**48. Gabe Parker****CONNECTED BY ENVIRONMENTS**

Corten, steel, aluminium, pPaint

Mimics the colours and textures of the earth's biosphere. The kinetic parts of the sculpture move by the same wind the viewer feels on their body and a duality will form between the two as a connection. This is intended as a metaphor for our daily connection to everything around us.

\$39,000

49. Jack Griffin**PELL'IAN HYPOCRISY**

Wrought iron and copper

Religious fanaticism in legislators, jurisprudence of enforcement, in the art of none disclosure.

\$88,000

50. Tom Buckland**BRUCE**

Concrete, steel, polystyrene

'Thinking about the immortality of the crab' is a Spanish saying about daydreaming. The phrase is usually a humorous way of saying that one was not sitting idly, but engaged constructively in contemplation or letting one's mind wander. Bruce the lobster is engaged in deep contemplation, longing to return to the ancient ancestral seas from whence we all came.

\$5,000

51. Senden Blackwood**OYO**

Granite, steel bolts, timber, wood plinth

Oyo explores polarities in scale and connection. The sphere is a universally efficient shape; self-contained yet intrinsically connected. I hope Oyo prompts contemplation of our place in the universe.

\$POA

49



50



51



**WE WOULD LIKE TO
THANK THE FOLLOWING**

PATRON, TERRY SNOW
PARTNERS AND SPONSORS
EXHIBITING ARTISTS
VOLUNTEERS
THE COMMUNITY

SCULPTUREFOR**CLYDE**.COM.AU